

Most PVC fittings have the following marks:

Name: VDL

Material: PVCu

Size: e.g. 40 x 1

Pressure: PN16 (16 Bar)

All catalogue numbers and descriptions in **bold type** are 16 Bar rated, all others are 10 Bar rated unless otherwise stated.



PVC PIPE

CODE	SIZE (MM)	WALL FEMALE	DIAM (MM)	LENGTH	
120.83-25-13	25	1.25	10	5.04	
120.83-32-18	32	1.8	10	5.04	
120.83-32-18-W3	32	1.8	10	4.54	Drilled 3/8"ww at 1.5m
120.83-32-18-W5	32	1.8	10	5.04	Drilled 3/8"ww at 1.0m
120.83-40-20	40	2.0	10	5.0	
120.83-50-24	50	2.4	10	5.0	
120.83-63-24	63	2.4	10	5.0	
120.83-75-29	75	2.9	10	5.0	
120.83-90-35	90	3.5	10	5.0	
120.83110-42	110	4.2	10	5.0	
120.83160-62	160	6.2	10	5.0	

REDUCING BUSH

CODE	DIAM (MM)	DIAM (MM)
120.80-14-10	20	16
120.80-14-20	25	16
120.80-14-21	25	20
120.80-14-30	32	16
120.80-14-31	32	20
120.80-14-32	32	25
120.80-14-41	40	20
120.80-14-42	40	25
120.80-14-43	40	32
120.80-14-52	50	25
120.80-14-53	50	32
120.80-14-54	50	40
120.80-14-63	63	32
120.80-14-64	63	40
120.80-14-65	63	50
120.80-14-73	75	32
120.80-14-74	75	40
120.80-14-75	75	50
120.80-14-76	75	63
120.80-14-95	90	50
120.80-14-96	90	63
120.80-14-97	90	75
120.80-14117	110	75
120.80-14119	110	90
120.80-14121	125	110
120.80-14161	160	125



SOCKET

CODE	DIAM (MM)	DIAM (MM)
120.80-05-02	10	10
120.80-05-04	12	12
120.80-05-00	16	16
120.80-05-11	20	20
120.80-05-22	25	25
120.80-05-33	32	32
120.80-05-44	40	40
120.80-05-55	50	50
120.80-05-66	63	63
120.80-05-77	75	75
120.80-05-99	90	90
120.80-05110	110	110
120.80-05125	125	125
120.80-05160	160	160



HEXAGON ADAPTOR

CODE	DIAM (MM)	BSP" Male
120.80-23-01	16	1/2
120.80-23-11	20	1/2
120.80-23-12	20	3/4
120.80-23-21	25/32	1/2
120.80-23-22	25/32	3/4
120.80-23-23	25/32	1
120.80-23-31	32/40	1/2
120.80-23-32	32/40	3/4
120.80-23-33	32/40	1
120.80-23-34	32/40	1 1/4
120.80-23-43	40/50	1
120.80-23-44	40/50	1 1/4
120.80-23-45	40/50	1 1/2
120.80-23-53	50/63	1
120.80-23-54	50/63	1 1/4
120.80-23-55	50/63	1 1/2
120.80-23-56	50/63	2
120.80-23-64	63/75	1 1/4
120.80-23-65	63/75	1 1/2
120.80-23-66	63/75	2
120.80-23-67	63/75	2 1/2
120.80-23-76	75/90	2
120.80-23-77	75/90	2 1/2
120.80-23-78	75/90	3
120.80-23-98	90/110	3
120.80-23-99	90/110	4
120.80-23118	110	3
120.80-23119	110	4



SOCKET ADAPTOR

CODE	DIAM (MM)	BSP" Female
120.80-20-00	16	3/8
120.80-20-11	20	1/2
120.80-20-21	25	1/2
120.80-20-22	25	3/4
120.80-20-31	32	1/2
120.80-20-32	32	3/4
120.80-20-33	32	1
120.80-20-43	40	1
120.80-20-44	40	1 1/4
120.80-20-54	50	1 1/4
120.80-20-55	50	1 1/2
120.80-20-65	63	1 1/2
120.80-20-66	63	2
120.80-20-77	75	2 1/2
120.80-20-98	90	3
120.80-20119	110	4



This is a selection of our irrigation products. For a full listing see the Irrigation section on our website www.dekerhort.ie



REDUCING BUSH

CODE	DIAM (MM)	BSP" Female
120.80-17-10	20	1/4
120.80-17-21	25	1/2
120.80-17-31	32	1/2
120.80-17-32	32	3/4
120.80-17-42	40	3/4
120.80-17-43	40	1
120.80-17-53	50	1
120.80-17-54	50	1 1/4
120.80-17-64	63	1 1/4
120.80-17-65	63	1 1/2
120.80-17-75	75	1 1/2
120.80-17-76	75	2



TEE X MALE TAKE OFF

CODE	DIAM (MM)	BSP" Male	DIAM (MM)
120.80-35-12	20	3/4	20
120.80-35-22	25	3/4	25
120.80-35-23	25	1	25
120.80-35-32	32	3/4	32
120.80-35-33	32	1	32
120.80-35-34	32	1 1/4	32
120.80-35-43	40	1	40
120.80-35-44	40	1 1/4	40
120.80-35-45	40	1 1/2	40
120.80-35-53	50	1	50
120.80-35-54	50	1 1/4	50
120.80-35-55	50	1 1/2	50
120.80-35-63	63	1	63
120.80-35-64	63	1 1/4	63
120.80-35-65	63	1 1/2	63
120.80-35-66	63	2	63
120.80-35-74	75	1 1/4	75
120.80-35-76	75	2	75



REDUCING TEE

CODE	DIAM (MM)	DIAM (MM)	DIAM (MM)
120.80-33-21	25	20	25
120.80-33-31	32	20	32
120.80-33-32	32	25	32
120.80-33-42	40	25	40
120.80-33-43	40	32	40
120.80-33-52	50	25	50
120.80-33-53	50	32	50
120.80-33-54	50	40	50
120.80-33-62	63	25	63
120.80-33-63	63	32	63
120.80-33-64	63	40	63
120.80-33-65	63	50	63
120.80-33-73	75	32	75
120.80-33-74	75	40	75
120.80-33-75	75	50	75
120.80-33-76	75	63	75
120.80-33-93	90	32	90
120.80-33-95	90	50	90
120.80-33-97	90	75	90
120.80-33113	110	32	110
120.80-33115	110	50	110
120.80-33117	110	75	110
120.80-33119	110	90	110



TEE

CODE	DIAM (MM)	DIAM (MM)	DIAM (MM)
120.80-30-33	32	32	32
120.80-30-44	40	40	40
120.80-30-55	50	50	50
120.80-30-66	63	63	63
120.80-31-02	10	10	10
120.80-31-04	12	12	12
120.80-31-00	16	16	16
120.80-31-11	20	20	20
120.80-31-22	25	25	25
120.80-31-33	32	32	32
120.80-31-44	40	40	40
120.80-31-55	50	50	50
120.80-31-66	63	63	63
120.80-31-77	75	75	75
120.80-31-99	90	90	90
120.80-31110	110	110	110
120.80-31125	125	125	125
120.80-31160	160	160	160



45° TEE

CODE	DIAM (MM)	DIAM (MM)	DIAM (MM)
120.80-34-33	32	32	32
120.80-34-44	40	40	40
120.80-34-55	50	50	50
120.80-34-66	63	63	63
120.80-34-77	75	75	75



TEE X FEMALE TAKE OFF

CODE	DIAM (MM)	BSP" Female	DIAM (MM)
120.80-39-11	20	1/2	20
120.80-39-22	25	3/4	25
120.80-39-33	32	1	32
120.80-39-44	40	1 1/4	40
120.80-39-55	50	1 1/2	50
120.80-39-66	63	2	63

This is a selection of our irrigation products. For a full listing see the Irrigation section on our website www.dekerhort.ie

7.5 BAR 2/3 PLAIN UNION

CODE	DIAM (MM)	BSP" Female
120.80-71-33	32	1 1/4
120.80-71-35	UNION	SEAL



3/3 SOCKETED UNION

CODE	DIAM (MM)	DIAM (MM)
120.80-72-22	25	25
120.80-72-33	32	32
120.80-72-44	40	40
120.80-72-55	50	50



2/3 SOCKETED UNION

CODE	DIAM (MM)	BSP" Female
120.80-73-23	25	1
120.80-73-33	32	1
120.80-73-34	32	1 1/4
120.80-73-55	50	1 1/2
120.80-73-56	50	2



UNION

CODE	DIAM (MM)	DIAM (MM)
120.80-74-04	12	12
120.80-74-00	16	16
120.80-74-11	20	20
120.80-74-22	25	25
120.80-74-33	32	32
120.80-74-44	40	40
120.80-74-55	50	50
120.80-74-66	63	63
120.80-74-77	75	75
120.80-74-99	90	90
120.80-74-111	110	110



UNION

CODE	DIAM (MM)	BSP" Female
120.80-76-11	20	1/2
120.80-76-22	25	3/4
120.80-76-33	32	1
120.80-76-44	40	1 1/4
120.80-76-55	50	1 1/2
120.80-76-66	63	2



UNION

CODE	DIAM (MM)	BSP" Male
120.80-78-11	20	1/2
120.80-78-22	25	3/4
120.80-78-33	32	1
120.80-78-44	40	1 1/4
120.80-78-55	50	1 1/2
120.80-78-66	63	2



CODE	DIAM (MM)	DIAM (MM)
120.80-62-11	20	20
120.80-62-22	25	25
120.80-62-33	32	32
120.80-62-44	40	40
120.80-62-55	50	50
120.80-62-66	63	63
120.80-62-77	75	75
120.80-62-99	90	90



REDUCING CROSS

CODE	DIAM (MM)	DIAM (MM)
120.80-64-43	40	32
120.80-64-53	50	32



CODE	DIAM (MM)
120.80-67-02	10
120.80-67-04	12
120.80-67-00	16
120.80-67-11	20
120.80-67-22	25
120.80-67-33	32
120.80-67-44	40
120.80-67-55	50
120.80-67-66	63
120.80-67-77	75
120.80-67-99	90
120.80-67-110	110
120.80-67-125	125
120.80-67-160	160

CAP



CODE	DIAM (MM)
120.80-69-11	20 (x 1/2)
120.80-69-22	25 (x 3/4)
120.80-69-33	32 (x 1)
120.80-69-34	32 (x 1 1/4)
120.80-69-44	40 (x 1 1/4)

END SET



CODE	DIAM (MM)	DIAM" Hose
120.80-66-00	12	1/2
120.80-66-01	16	5/8
120.80-66-12	20	3/4
120.80-66-23	25	1
120.80-66-34	32	1 1/4
120.80-66-45	40	1 1/2
120.80-66-56	50	2

HOSE ADAPTOR



7.5 BAR 3/3 SOCKETED UNION

CODE	DIAM (MM)	DIAM (MM)
120.80-71-30	32	32



7.5 BAR 2/3 SOCKETED UNION

CODE	DIAM (MM)	BSP" Female
120.80-71-32	32	1 1/4



This is a selection of our irrigation products. For a full listing see the Irrigation section on our website www.dekerhort.ie



ELBOW X MALE TAKE OFF

CODE	DIAM (MM)	BSP" Male
120.80-46-12	20	3/4
120.80-46-23	25	1
120.80-46-32	32	3/4
120.80-46-33	32	1
120.80-46-34	32	1 1/4
120.80-46-44	40	1 1/4
120.80-46-54	50	1 1/4



MALE X PLAIN X MALE TEE

CODE	BSP" Male	DIAM (MM)	BSP" Male
120.80-36-33	1	32	1
120.80-36-43	1 1/4	32	1 1/4
120.80-36-44	1 1/4	40	1 1/4



ELBOW X FEMALE TAKE OFF

CODE	DIAM (MM)	BSP" Female
120.80-48-11	20	1/2
120.80-48-22	25	3/4
120.80-48-33	32	1
120.80-48-44	40	1 1/4
120.80-48-55	50	1 1/2
120.80-48-66	63	2



90° ELBOW

CODE	DIAM (MM)	DIAM (MM)
120.80-41-33	32	32
120.80-41-44	40	40
120.80-41-55	50	50
120.80-41-66	63	63
120.80-42-02	10	10
120.80-42-04	12	12
120.80-42-00	16	16
120.80-42-11	20	20
120.80-42-22	25	25
120.80-42-33	32	32
120.80-42-44	40	40
120.80-42-55	50	50
120.80-42-66	63	63
120.80-42-77	75	75
120.80-42-99	90	90
120.80-42110	110	110
120.80-42125	125	125
120.80-42160	160	160



90° BEND

CODE	DIAM (MM)	DIAM (MM)
120.80-54-33	32	32
120.80-54-44	40	40
120.80-54-55	50	50
120.80-54-66	63	63
120.80-54-77	75	75
120.80-55-22	25	25
120.80-55-33	32	32
120.80-54-44	40	40
120.80-55-55	50	50
120.80-55-66	63	63
120.80-55-77	75	75
120.80-55-99	90	90
120.80-55110	110	110
120.80-55160	160	160



45° ELBOW

CODE	DIAM (MM)	DIAM (MM)
120.80-51-04	12	12
120.80-51-00	16	16
120.80-51-11	20	20
120.80-51-22	25	25
120.80-51-33	32	32
120.80-51-44	40	40
120.80-51-55	50	50
120.80-51-66	63	63
120.80-51-77	75	75
120.80-51-99	90	90
120.80-51110	110	110
120.80-51125	125	125
120.80-51160	160	160



45° BEND

CODE	DIAM (MM)	DIAM (MM)
120.80-57-33	32	32
120.80-57-55	50	50
120.80-58-55	50	50
120.80-58-66	63	63
120.80-58-77	75	75
120.80-58-99	90	90
120.80-58110	110	110



REDUCING ELBOW

CODE	DIAM (MM)	DIAM (MM)
120.80-44-43	40	32
120.80-44-53	50	32
120.80-44-54	50	40



S-BEND

CODE	DIAM (MM)	DIAM (MM)
120.80-60-33	32	32
120.80-60-55	50	50



This is a selection of our irrigation products. For a full listing see the Irrigation section on our website www.dekerhort.ie

SOCKET

CODE	BSP" Female	BSP" Female
120.80-85-00	3/8	3/8
120.80-85-11	1/2	1/2
120.80-85-13	1/2	1/4
120.80-85-22	3/4	3/4
120.80-85-33	1	1
120.80-85-44	1 1/4	1 1/4
120.80-85-55	1 1/2	1 1/2
120.80-85-66	2	2



NIPPLE

CODE	BSP" Male	BSP" Male
120.80-87-00	3/8	1/4
120.80-87-01	3/8	3/8
120.80-87-10	1/2	3/8
120.80-87-11	1/2	1/2
120.80-87-21	3/4	1/2
120.80-87-22	3/4	3/4
120.80-87-32	1	3/4
120.80-87-33	1	1
120.80-87-43	1 1/4	1
120.80-87-44	1 1/4	1 1/4
120.80-87-54	1 1/2	1 1/4
120.80-87-55	1 1/2	1 1/2
120.80-87-65	2	1 1/2
120.80-87-66	2	2
120.80-87-88	3	3



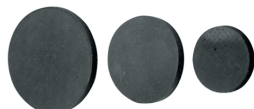
CAP

CODE	BSP" Female
120.80-89-00	3/8
120.80-89-11	1/2
120.80-89-22	3/4
120.80-89-33	1
120.80-89-44	1 1/4
120.80-89-55	1 1/2
120.80-89-66	2
120.80-89-77	2 1/2
120.80-89-88	3



CAP WASHER

CODE	BSP" Female
120.80-90-11	1/2
120.80-90-22	3/4
120.80-90-33	1
120.80-90-44	1 1/4
120.80-90-55	1 1/2
120.80-90-66	2
120.80-90-88	3



TEE

CODE	BSP" Female	BSP" Female
120.80-92-33	1	1
120.80-92-55	1 1/2	1 1/2
120.80-92-66	2	2



ELBOW

CODE	BSP" Female	BSP" Female
120.80-93-11	1/2	1/2
120.80-93-22	3/4	3/4
120.80-93-33	1	1
120.80-93-55	1 1/2	1 1/2
120.80-93-66	2	2



PLUG

CODE	BSP" Male
120.80-83-00	3/8
120.80-83-11	1/2
120.80-83-22	3/4
120.80-83-33	1
120.80-83-44	1 1/4
120.80-83-55	1 1/2
120.80-83-66	2



FILTER

CODE	DIAM (MM)
120.81-20-33	32



DRAIN VALVE (SPRING)

CODE	DIAM
120.80-96-33	32mm
120.80-96-40*	1 1/4



*Without Elbow

PIPE CLAMP WITHOUT CLIP

CODE	DIAM (MM)
120.81-10-05	12
120.81-10-00	16
120.81-10-11	20
120.81-10-22	25
120.81-10-33	32



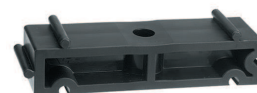
PIPE CLAMP WITH CLIP

CODE	DIAM (MM)
120.81-11-44	40
120.81-11-55	50
120.81-11-66	63
120.81-11-77	75
120.81-11-99	90
120.81-11110	110
120.81-11125	125
120.81-11160	160



SPACING BLOCK FOR CLAMPS

CODE	DIAM (MM)
120.81-08-16	16
120.81-08-20	20
120.81-08-25	25
120.81-08-32	32
120.81-08-40	40
120.81-08-50	50
120.81-08-63	63
120.81-08-75	75



This is a selection of our irrigation products. For a full listing see the Irrigation section on our website www.dekerhort.ie